

# On the RIVER



## *Connecting ALVA Florida NEIGHBORS and NEIGHBORHOODS*

TO SUBSCRIBE, offer articles, or to contact the publisher/editor with any questions, email Ken DeWalt [kendewalt@ontheriver.org](mailto:kendewalt@ontheriver.org)

The deadline for receipt of any materials is the 15<sup>th</sup> of the month.

Issues go out before the 1<sup>st</sup> of each month, and may be edited.

See our commercial advertising terms on the last page of this newsletter. We encourage all subscribers to consider patronizing the paid advertisers. Their support of our mission helps us provide you with local news every month.

### FEATURED IN THIS MONTH'S OTR:

- LOCAL Alva area news: New RV Park on Palm Beach Blvd?
- LOCAL history: Caloosahatchee ca 1900
- LOCAL Community services: Riverdale Library Moves
- LOCAL club and organization: FM Shores ROTARY CLUB
- LOCAL recipe: Tropical Kisses
- LOCAL Sports: Chastain 4<sup>th</sup> at Austin



[www.ONTHERIVER.ORG](http://www.ONTHERIVER.ORG) Archive of all OTR newsletters and lots more, all FREE including a link to <http://www.alvafl.org/newsletter.html> to see previous Alva INC newsletters archived since 2010

**WE NEED YOUR COMMENTS!**

**LET US KNOW WHAT YOU WOULD LIKE TO SEE IN *ON THE RIVER* BY EMAILING US AT  
[WWW.KENDEWALT@ONTHERIVER.ORG](mailto:WWW.KENDEWALT@ONTHERIVER.ORG)**

**WE'LL DO OUR BEST TO OFFER WHAT YOU WANT.**

## ALVA INC, At the Alva Community Center.

ZOOM access:

<https://zoom.us/join>

Meeting ID: 852-1643-8980

Passcode: 302401



[Info@AlvaFL.org](mailto:Info@AlvaFL.org) WEBSITE [www.ALVAFL.org](http://www.ALVAFL.org)

**NEXT MEETING: Every Second Tuesday, 7pm, Alva Community Center**



## Over 60 Alva Residents Crowd March 14 ALVA INC Meeting

Connie Dennis, the group's president, opened the monthly meeting with the Pledge of Allegiance to the American Flag, followed by reports from Committee Chairs. Patrick ... has updated the appearance and access to their web page: [wwwALVAFL.org](http://wwwALVAFL.org) . He also shared that the ZOOM process is being updated to

make it more user friendly for folks not able to attend meetings.

The only agenda item for this month was the NEAL PROPERTIES presentation of their hoped-for rezoning approval to expand the planned development on North River Road (Rte 78) at Olga.

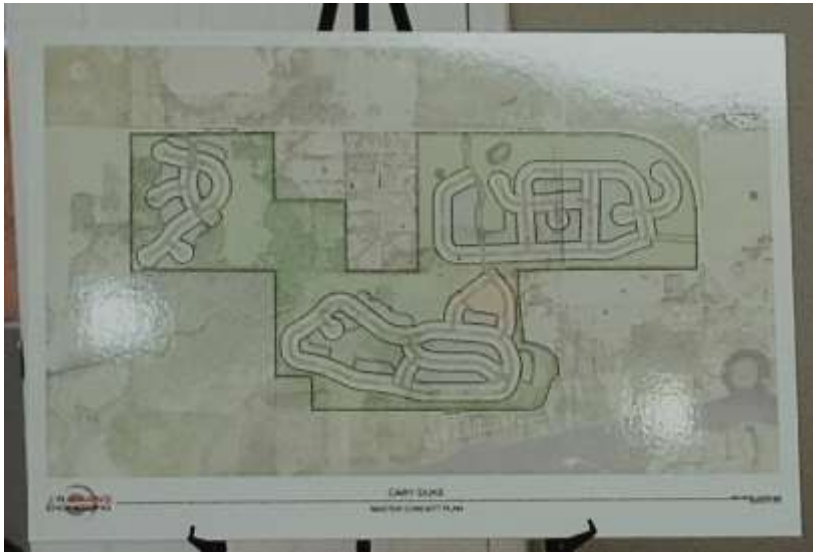
### • North River Road, Olga Residential Development: Cary+Duke+Povia RPD

The request is to rezone the 788+/- acre Property from Agriculture (AG-2) to Residential Planned Development (RPD) to allow for a maximum of 1,099 single-family dwelling units, private on-site recreational uses, and supportive infrastructure. The maximum building height would be 35 feet. The single-family houses will be built on lots measuring 40 ft x 100 ft and the two-dwelling attached houses on 30 ft x 100 ft lot per dwelling.

The Neal presenters shared that over 60% of the property will be preserve land, made up of an expensively developed restoration from current pasture to wetlands and woods. There will be two amenities' centers with pools to service the gated communities' residents.

The site will connect to centralized water and sewer services. A companion Comprehensive Plan Amendment will include the subject Property in the Lee County Future Water Services Area Map (Map 4A) and the Future Sewer Service Area Map (Map 4B).





While the presentation was very detailed, company representatives were quick to share that even though they are already a year and more into planning for this project, this public meeting, and others they have had with the North Olga Planning Group, are only at the beginning of the county and state hearings and approvals process they must go through.

Definite answers to traffic, water, sewer, storm preparation and evacuation, etc all await those meetings and the responses to this development plan from Lee County and state authorities including engineers, scientists and ultimately elected officials.

The bulk of the meetings 75 minutes were taken up with hearing concerns from the public and responding as best the presenters could at this time.

The meeting was primarily civil and peaceful, even though many of those in the audience are very concerned with even the concept of over 1,000 homes (Expecting over 4,000 residents) being built in a tight suburban style community in Northeast Lee County, the last fully agricultural/rural area of the county.



Some of the concerns shared included:

- Alva is part of the Comprehensive Lee County Plan which states that this area may not have a single home built on less than one acre. See the nearby Riverwind Cove development as an example of appropriate development for the Alva area.

- While not yet planned, a possible four lane North River Road, to handle just this increase in traffic over time, is unacceptable for Alva.

- Construction of just this property could take up to 10 years (The Owl Creek development of possibly over 500 homes, and other developments in different stages of development between I-75 and this project will see over 6,000 new homes in the next several years) would mean constant construction and dump truck traffic on North River Road during this time. We have seen a serious uptick in auto-dump truck fatalities just in the past year, even before Hurricane Ian.

- These new suburban residents will not likely vote to keep the Alva area rural, and as pioneer settler families whose earliest ancestors farmed here in the late 1800's and their newer rural focused

neighbors become a smaller and smaller minority it is believed Alva will lose the character and purpose that brought all of these neighbors together here along the Caloosahatchee River.

-Fire protection and Emergency services, already under severe handicaps in finding professionally trained and volunteer servicepersons will need to exponentially increase their services. Emergency Medical services are also currently 30 to 45 minutes away in the Babcock Farm, Lehigh Acres, and Fort Myers communities. The helicopter pad in 50 year old Oak Park Village, the only manufactured home community in Alva, receives an average of five or more life flight landings a year now.



FDOT: Design is ongoing. Construction is anticipated to be completed by 2025

-At the recent Florida Department of Transportation workshop held at Babcock Ranch residents were able to see proposed coming development of Rte 31 from Babcock Ranch over a new bridge to Rte 80 that would enhance traffic flow if built today, but will take years under construction and how many more new homes will be coming then?

-A 40-year resident of Alva shared that the County has the developed LEE COUNTY PLAN. Stick to that plan, do not try to get around it with formulations of preserve to allowed lot size arithmetic, no matter how legal that may be. Then we can all go home happy.

-Connie Dennis and others reminded several who hoped for County Commissioner attendance at this and other meetings that in Lee County the Commissioners are not permitted to speak or comment to any rezoning proposal before the project comes before them in official hearings. While many counties in Florida do allow such comment, our current commissioners have no interest in changing this rule.

The meeting ended amicably enough, though all were reminded that ALVA INC and the residents it represents, will not go down quietly to a rezoning of this property.



# Alva's slow-growth vision being tested

## Developer seeks to expand RV park plan, add business strip

(TY Amy Bennett Williams & News Press)

*This article was printed on the front page, Thursday March 9, 2023. The Alva area, in the extreme northeast of Lee County, has been called "the last country left in Lee County". Expect this publication and the News Press to continue to report the efforts of Alva INC to follow their motto, "Keep Alva Rural".*



"Alva has a unique country ambiance that is rapidly becoming hard to find in Florida. The recent history of Southwest Florida ... has been one of extremely rapid development. It will take a concerted effort to ensure that development change in Alva occurs in a manner that maintains the rural character and lifestyle of this area." — Lee County ordinance 11-21 On paper, Alva has done what it can to grow the way its 3,000 residents intend: slowly, sparsely, and in keeping with its historically rural character. Old live oaks, grazing cattle, citrus groves and a tiny Caloosahatchee riverfront "downtown" featuring Lee County's oldest library (now a museum) and church characterize the unincorporated village, which stretches from Lehigh Acres north to Charlotte County.

That vision, hammered out in a series of public meetings more than a decade ago, was distilled into an ordinance incorporated by Lee County officials into the master document known as the Lee Plan, a 311page book laying out how the county is to develop.

Now, Alva's ordinance is being tested: A developer is asking to nearly double the density of a proposed high-end RV park while adding a business strip far outside the commercial zone Alva wrote into its plan. Owned by Florida real estate legend Al Hoffman, the polo-playing former ambassador to Portugal, the 192acre site, dubbed Caloosa 80, stretches along S.R. 80 15 miles east of Fort Myers and five miles west of the

Hendry County line. It is bordered by Bateman Road to the west, across from the Hickey Creek Mitigation Park, home to gopher tortoises, scrub jays and other protected Florida species.

Dating from the early 2000s, the project has changed shape and density a few times. One giant central lake has split into four and instead of an onsite wastewater treatment plant, hopes now are of tying into a to-be-extended county sewer system, says the project's public face, Stan Whitcomb. Another prolific Florida developer (think Coral Springs, Sun City Center, and Collier Enterprises), Whitcomb has appeared at two community gatherings recently to pitch the project to largely skeptical crowds.

At the February meeting of Alva Inc., the nonprofit that helped craft the unincorporated village's ordinance, Whitcomb, accompanied by planner Alexis Crespo, explained the project's updates, showing slides and answering questions.

Audience members had plenty to ask about the proposed density increase. Though the developer initially asked for 416 lots (the county's land use map permits 691) Crespo told the group, "We are going to resubmit to the county with a request for 700 units — eight more units than we can seek under the current future land use designation (recreational vehicle planned development) ... So, we're going back to Lee County and are trying to change our zoning."

Crespo noted that existing homeowners would not be made to connect to county utility lines extended for the project unless they were redeveloping their properties. Whitcomb sees the tie-in to municipal utilities as "a big plus, because all of Alva is on septic tanks and ... there's been a lot of concern about septic tanks on the water and the river."

The density boost would maximize profit while helping pay for bringing in those sewer and water lines, Crespo said.

Many at the meeting did not buy that reasoning. "It's not our problem that you can't afford to keep it to 416 because you want to bring in sewer and water," said Alva resident Denise Eberle. "We should not have to deal with your mistake ... 700 RVs? That population from what I read means 2,000 more people. Alva is only 3,000 people and we like it like that. We do not want 2,000 more people here ... This goes against everything Alva."



*Photo from a fall, 2022 meeting*

That echoes Alva Inc's position, which especially opposes the commercial strip. It is "completely against our Lee County-approved Alva Community Plan (which) puts all new commercial development in the Alva Village located in central Alva close to the Alva bridge," President Connie Dennis wrote in an email. "Bringing sewer and water to the site ... could bring further development along Highway 80, possibly even strip malls (and) bring a dramatic increase in the heavy traffic currently experienced."

Another major concern: "The impact this development could have on our environment. It is surrounded on three sides by preserve area that is home to a variety of wildlife, including bears and Florida panthers," Dennis wrote.

Whitcomb and Crespo see their project as far more environmentally friendly than many in the region. "We've preserved the wetlands; we're doing buffers around it so you see trees and vegetation from the exterior (and) we've tried to rework it to make it a nice community," she said. "I think without this, it would certainly be a 780-unit subdivision. So, we are hoping you see the value and some of the benefits of this use."



Alva's former county commissioner, the late Frank Mann, supported Alva's community plan, but the district's new commissioner, Mike Greenwell, attended neither of the meetings about Caloosa 80, nor was he available when The News-Press made repeated requests for comment.

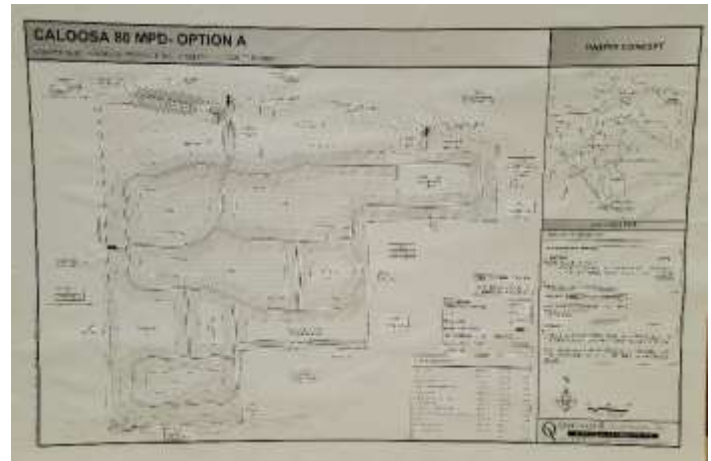
About the four acres of commercial along S.R. 80, Crespo told the community meeting, "The idea here is to have a food store, maybe

a bank, neighborhood businesses that would be open to the public,” she said. “We tailored the list to things we think you will be amenable to – like restaurant medical office, professional office – no arcade, no tattoo parlor. We’ve tried to exclude the bad items (and) darn it, it’s nice to be able to get a gallon of milk at 8 o’ clock a mile from your house instead of driving all the way to the Veranda Publix.”

At this, there were audible groans from the crowd. One voice rose: “No. That’s not why we’re out here.”

Crespo paused. “So, you all moved out here because you did not want convenience? But to the extent change is coming to the area inevitably — because we are in Southwest Florida — we do want these uses to be something of service to you all.”

Whitcomb predicts once it is in, residents will come around. “In fact,” he points out, “there is already a commercial facility (the Alva Village Market) just before you get to Bateman Road ... The truth is, I think some of them really would like to see it.” He notes that late Alva Inc. President Ruby Daniels supported the project (though it then was 416 slots and minus the commercial strip.) “When we first took it to the county commission, she was right there beside me,” he said.



Plus, Whitcomb is not convinced Alva’s portion of the Lee Plan will be legally binding, “I don’t think they can stop it,” he said, “(It’s) just hollering ... In the county land use plan, it says that the bulk of their commercial should be in the rural village, but it does not say it must be there.” (The policy reads: “To prevent strip development along Palm Beach Boulevard the majority of acreage available for commercial development will be located within the rural village, particularly the village center.”) That wording leaves what Whitcomb sees as ample wiggle room for his commercial space.

“There’s some people who don’t want anything, but the reality is, zoning is in place for at least 400 units, and 700 units is not going to make that big a difference in terms of traffic or anything else,” he said. “The Alva people have argued that all the commercial for Alva should be near the bridge, but they don’t have any sewer or water capacity (so) it’ll be a long time before anyone can build downtown on the river.”

That is just the point, many residents say. “Look at Fort Myers Shores,” said resident Roxane Gause. “The minute you get one strip center in, away they go.”

Alva Village Market owner Dick Spence, who lives on Bateman Road, agrees. “If you get commercial here, we’re going to open another can of worms down the road very soon,” Spence told Whitcomb. “It just seems like when we give you an inch, you take a yard, and the next guy down the block takes a mile.

“We don’t want that out here,” he said. “I want to keep out here rural. Alva is only 3,000 people and we like it like that. We do not want 2,000 more people here ... This goes against everything Alva.”  
Denise Eberle, Alva resident

# Pythons continue to move north in Florida

(TY WINK NEWS Rachel Cox-Rosen)



Florida is filled with snakes, especially pythons.

So much so that every single year, people put their lives on hold to go out and hunt the as part of the annual python challenge. The U.S. Department of the Interior said there could be as many as a million pythons in the Everglades.

The slithery animals seem to be moving out of the swamps and into Southwest Florida. A “cryptic” and “resilient,” invasive front. That is how the January

study from the U.S. Geological Survey describes the invasive Burmese pythons.

“They spend 85% of their time not moving. And when they do move, it is very slow, and they don’t like to be exposed,” said Amy Siewe, a python hunter. Siewe spends hours in the Florida wilderness looking for the massive creatures. She has seen their northern movement firsthand.

“When I first started four years ago, the general area that we would hunt would be, you know, 41, between like 29, and Krome, that was the main area. And now I live about 10 miles north of that. So, every night after I’d finished hunting, I would have to drive 41 home. And the first year never saw python on my way home. Second year, I saw like a dead 1/3 year, caught a 10-footer last year, there were a bunch,” Siewe said.



The data supports anecdotal stories like that one.

The snake’s population used to be south of I-75 and west of Miami-Dade and Broward counties.

But nine years later, in 2012, there is a dramatic jump in snakes spotted well north of I-75 and creeping close to Florida’s east coast. By 2021? The pythons were reported in Charlotte County and almost stretching across the whole state from east to west.



“It takes a python three years to get to be 10 feet, and it takes 200 mammals and birds to get it there. So, every single one that we’re taking out of the Everglades is really making a difference for our native population. So that’s how I have to look at it,” Siewe said.

Hunters remain one of the best tools available to get rid of snakes. The study concludes by saying it’s going to take a ton of work to suppress the python population and that eradication in Florida is likely impossible.





## Florida’s Housing Insurance Crisis Is About to Get Worse

(TY J P Allegre)

Florida’s housing insurance crisis is about to take a turn for the worse as property insurance premiums are expected to rise significantly in the next few months. Florida’s current property insurance rates are already some of the highest in the country.

Premiums could go up as much as 25% by June 1, according to John Rollins, former Chief Risk Officer at Citizens Property Insurance, in a local report. And the main driver, Rollins says, is the cost of reinsurance or the insurance for insurance companies.

The rates for reinsurance have gone up 100% in the last four years, and experts are projecting another 50% hike by June 1. And when these go up, insurers will pass some of the burden to consumers.

“So, when the reinsurers raise their rates 50% in a single cycle like June 1st, that could lead to 25% rate increases for the average Floridian,” said Rollins. “Right now, it’s at a generational high and probably representing 50% or more of the average consumer’s premier dollar.”

But this is not likely to solve the problem as Floridians are finding property insurance rates so high that in a climate where the cost of living has become less affordable, many have been forced to just forgo it completely.

An estimate by the Insurance Information Institute in December found that 13% of Florida homeowners do not have property insurance, almost double the national average of 7%. Spokesman Mark Friedlander told Tampa Bay Times that the figure is mostly driven by those who have already paid off their mortgages and are now on fixed incomes, or those paying cash to acquire their homes, “particularly those living in manufactured homes.”

For those who still carry mortgages but decide to drop property insurance, the lender, in a move to protect their interests, can resort to lender-placed or force-placed insurance and force homeowners to pay higher premiums plus charges.

Insurers, on the other hand, are facing insolvency. At least six Florida property insurance companies have been placed into receivership due to insolvencies in 2022. One of the most recent insurers to face this fate, United Property & Casualty Insurance Company (UPC), was put into receivership by Florida’s Office of Insurance Regulation (OIR) the first week of March.

Floridians have taken to Twitter to express their frustrations on how Governor Ron DeSantis has handled, or not handled the crisis. Some have accused the recently re-elected Republican to be too busy running for president to address the more urgent problems in his state — although DeSantis has not officially announced his bid for the 2024 presidential election.

Information for this briefing was found via Tampa Bay Times, Insurance Business America, Twitter, and the sources and companies mentioned. The author has no securities or affiliations related to the organizations discussed. Not a recommendation to buy or sell. Always do additional research and consult a professional before purchasing a security. The author holds no licenses.

For more information: <https://fitortreform.com/>



# State Road 29 Expansion Could Ruin Downtown LaBelle and its Riverfront Forever

(By Leonard Enriquez, LNE@cambridgeprojectdev.com)

Small communities like LaBelle, Florida, have a unique charm and character that sets them apart from larger cities. They offer a sense of community and belonging that is hard to find in urban areas. One of the critical factors that make these smaller towns attractive is their downtown areas, which are usually the historic heart of the community. However, preserving downtown areas can be a challenge, especially when they are located along major transportation routes.

The Florida Department of Transportation (FDOT) is responsible for managing the state's transportation infrastructure, including roads, bridges, and highways. While their primary goal is to ensure safe and efficient travel for all Floridians, their decisions can have unintended consequences for small communities like LaBelle.



One of the major issues facing LaBelle is the proposed expansion of State Road 29, which runs North-South through the town's "Historic Downtown" area and through its irreplaceable Riverfront. FDOT has proposed converting beautiful, quiet Main Street, a designated "Oak Canopy Road", into a busy highway, in order to gain North-South capacity additional to that provided now by Bridge Street. Main Street, as the second highway under the current FDOT proposal, would then receive fast, heavy traffic from a second bridge parallel to the location of the existing bridge.

**The following are some of the other major impacts that would arise from the proposed FDOT plan presented on 11/30/2022:**

- Very large concrete retaining walls and/or earth embankments ramping down off the proposed second bridge a few feet from Barron Library will forever eliminate the green space (also has ancient oaks) between the Library and Bridge Street.
- This high-speed down/up ramp would also block children and other pedestrians from safely reaching the Barron Library from the rest of Downtown, and would permanently block the River view in front of the Library; the City Docks would also be blocked off, and possibly demolished.
- Since Park Avenue and Main Street make up the staging area for the famous Swamp Cabbage Festival Parade and would be blocked by the new roadways, that festival would likely have to be moved away from Downtown.
- The FDOT plan calls for a major intersection (either traffic lights or a roundabout) at the foot of the Bridge Street bridge, which would, according to the FDOT designs presented on 11/30/22, eliminate pieces of Barron Park and historic buildings on the West side of Bridge Street.

Clearly, this proposed expansion would have a devastating effect on the town's character and heritage.

Many residents and community leaders, including our grass roots group "Second Bridge Group", are advocating for an alternative solution, such as a "Bypass Route" that would allow fast and heavy traffic to bypass Downtown LaBelle entirely. The Bypass Route would be dedicated to heavy truck traffic (tractor-trailers and dump trucks) and high-speed inter-city traffic that would otherwise continue to pass (as they do today) through the center of LaBelle.

The Bypass Route would provide access to a "Second Bridge" river crossing through uninhabited areas west to the East of downtown. FDOT projects traffic on SR 29 to grow by about 235% by the FDOT "design year". While the FDOT has indicated that they are open to considering alternative solutions like the Bypass Route, they have yet

to show this. For example, FDOT held a “Workshop” in LaBelle on 11/30/22, but no one from the community was allowed to address the large audience that attended.

FDOT promised to publish public comments submitted on the FDOT project web site about 40 days after the Workshop. As of 3/20/23 To date, over 90 days later, FDOT had not published the public comments submitted. In addition, FDOT has scheduled “non-Sunshine” (non-public) individual meetings with all five members of the LaBelle City Commission on 3/29/23. So far, this has been a “One-Way Monologue” (pun intended) from FDOT.

As always, It is essential to involve all stakeholders in the planning process, including local residents, business owners, and community leaders, to ensure that the final solution meets the needs of the entire community. It is, of course, essential to balance the need for safe and efficient transportation with the preservation of these unique communities.

By adopting a more open posture that includes a “Bypass Route Design Study”, FDOT could work with local residents to find solutions that benefit everyone and preserve LaBelle’s historic downtown area for future generations.

If you agree that FDOT should consider an alternative to the through-town plan they have so far championed, please consider contacting any or all of these local and state government policymakers. :



Today’s Riverfront at LaBelle. Existing bridge is to the left. The proposed FDOT second bridge and its off-ramps, embankments, ETC. would be built in the small space between the City Docks and the Barron Library (center of photo) and the existing bridge.

**-Governor DeSantis Office at 850-717-9337**

Office of Governor Ron DeSantis, State of Florida

The Capitol, 400 S. Monroe St., Tallahassee, FL 32399-0001

**-State Senator Kathleen Passidomo at 863-674-7122**

409 The Capitol, 404 South Monroe Street Tallahassee, FL 32399-1100

(850) 487-5028, Senate VOIP: 5028

**-State Representative Lauren Melo at 850-717-5082**

308 House Office Building, 402 South Monroe Street, Tallahassee, FL 32399-1300



*Main Street "CANOPY ROAD"*

**City of LaBelle Mayor and Commissioners at 863-675-2872**  
(Mayor Julie Wilkins/ Comm

Daniel Akin / Comm. Jackie Ratica / Comm. Bobbie Spratt /  
Comm. Hugo Vargas.)

481 West Hickpochee Avenue, LaBelle, FL 33935

**-FDOT District 1 Secretary L.K. Nandam at Phone: (863) 519-2201**  
Cell: (863) 640-5049,

Florida Department of Transportation, District One, Southwest  
Area Office (SWAO),

10041 Daniels Parkway, Fort Myers, FL 33913

# Lee County Civic Center Complex

(TY James Kennedy for posting to Facebook)

The Lee Board of County Commissioners is working with county staff to visualize a new, reimagined future for the Lee County Civic Center complex. The county has conducted and completed a facility-condition assessment study. The county is pleased to provide residents with the opportunity to explore an interactive map and share their thoughts using the new Civic Center survey. A summary of Board actions as well as information about next steps for the complex will help keep you informed. The Board is commitment to maintaining activities for 4-H and the Southwest Florida Fair. Check back frequently to keep up with evolving plans and further opportunities for public input for this important county site.



An assessment study of the Lee County Civic Center site located at 11831 Bayshore Road, North Fort Myers, FL was conducted by a team of specialized local architects and engineers licensed in Florida.

The study evaluated all 14 buildings of the approximate 100-acre property. The executive summary provides an overview of the completed comprehensive structural and architectural assessment and, along with input from the community, will help determine the best course of action for the facility to continue to host various activities.

The Lee County Civic Center includes 163,255 square feet of floor space and was constructed to accommodate a variety of shows or events. The center has hosted concerts, agriculture events, fairs, trade shows, high school graduations and other events since its opening in 1978 and includes the

county's fairgrounds. Lee County owns the Civic Center and the surrounding property. The property has been managed by the Southwest Florida & Lee County Fair Association since 1996.



Although improvements and repairs have been made during its lifetime, an assessment of the facility's condition was needed to determine the best course of action to be able to continue to host various activities and support both 4-H and South Florida & Lee County Fair.

**Complete Lee County report, and request for your ideas for the center:**

[https://www.leegov.com/civiccenter?fbclid=IwAR3aBdGzfhYqi7s1GT\\_zZN-fRiKkrjaaDBqEJlgL2xT\\_0ZDVQ9b8FsqiNY&mibextid=Zxz2cZ](https://www.leegov.com/civiccenter?fbclid=IwAR3aBdGzfhYqi7s1GT_zZN-fRiKkrjaaDBqEJlgL2xT_0ZDVQ9b8FsqiNY&mibextid=Zxz2cZ)

SHELTER (863) 675-0997

CLINIC (863) 675-7387

[info@caloosahumanesociety.org](mailto:info@caloosahumanesociety.org)

<https://caloosahumanesociety.org/>

Caloosa Humane Center 1200 Pratt Blvd, LaBelle

#### OUR MISSION

**The Mission of Caloosa Humane Society is to serve, shelter, and protect the homeless pets in our care. We are dedicated to finding permanent and loving adoptive homes for our companion animals in need. Our no-kill facility provides low cost spay/neuter services to the community with the goal of reducing the extreme overpopulation of unwanted pets.**



### South Florida Wildlands Association

a non-profit organization dedicated to the protection of wildlife and habitat in the Greater Everglades.

<https://www.southfloridawild.org/>



## Lee County Sheriff's Office

### Help Families Affected by Hurricane Ian

#### To volunteer or provide supplies:

##### United Way:

Website: <https://unitedwaylee.org/volunteer/>

Phone: 239-433-3900 or 211 (if local)

##### SWFL Emergency Relief Fund

Website: <https://collaboratory.org/>

##### Florida Disaster Fund

Website: <https://www.volunteerflorida.org/donatefdf/>

Phone: text **DISASTER** to 20222

##### American Red Cross

Website: <https://www.redcross.org/>



# BARRON LIBRARY

at the LaBelle Caloosahatchee  
Dock Park

---

There is going to BEE a

## BABY SHOWER

**Healthy Start**  
SOUTHWEST FLORIDA

Saturday | Barron Park  
April 1st | 1559 De Soto Ave  
11am to 1pm | Labelle, FL 33935

This **FREE EVENT** will provide educational materials for new moms, items for both Mom and Baby, and connections to resources and supportive services in our community.

**REGISTER BY CALLING (239)425-6920 OR EMAIL INFO@HEALTHYSTARTSWFL.COM**

Community resources will be available at the event.

Each Mom receives an expectant mother bag with a sleep sack, diapers, wipes, soap, and information on taking care of your new baby.

Prizes will be given away at the event such as car seats, pack and plays, and educational toys.

**Connect**  
SAFE KIDS SOUTHWEST FLORIDA  
Diaper Bank  
United Way  
Help Me Grow Florida  
Nurse-Family Partnership



---

## The Alva Chapter USS Hannah, Daughters of the American Revolution



USS Hannah Chapter, Alva, Florida, <https://usshannahnsdar.org/>

NSDAR is not a part of, or endorsed by, the Department of Defense

---



# FORT MYERS EAST ROTARY CLUB

We meet every Wednesday at 7:30 AM at the Cracker Barrel at I-75 (Exit 141) and Palm Beach Boulevard. Contact Ellen Erickson at 239-218-4789 to learn how you can be a part of this long-standing service and fellowship club.



**The Alva Library Museum**  
**21420 Pearl St, Alva, FL 33920**



Public Library, Alva

Originally a public library built in 1909, it now serves as a museum of artifacts from the original settlers of Alva.

The library-museum Board is making the building available as small group venue for parties, clubs, etc.

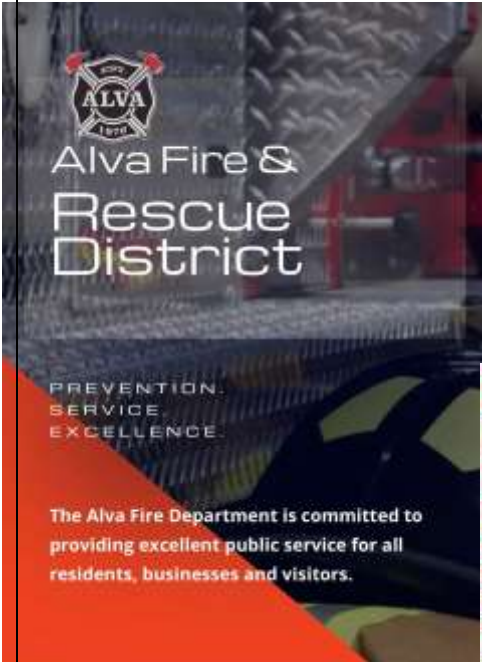
THE LIBRARY IS OPEN FOR FREE TOURS BY APPOINTMENT ONLY

For information on renting or touring please contact Linda Bush from the Alva library-museum Board.

The phone number is posted on the front door of the library building.

See a virtual video tour of the Museum at: <http://alvaflmuseum.com> (click on Virtual Tour)





2660 Styles  
Road, Alva,  
Florida 33920  
(239) 728-2223



- \*Donate*
- \*Volunteer*
- \*Serve*

---

# FREE Easter Fun

food and games

**Wed. 4/5 6:00-8:00**

14036 Matanzas Dr.  
(239) 694-2797

Facebook: Grace Church, Fort Myers Shores Campus

The background of the Easter event announcement features several colorful Easter eggs with various patterns: a yellow one with white stripes, a pink one with white circles, a green one with white zig-zags, a pink one with white stars, and a blue one with white polka dots.





# The ALVA GARDEN CLUB

Each month we have special speakers presenting interesting and relevant information. We also plan field trips that enhance our knowledge and inspire good garden practices.

Membership in the Alva Garden Club is still only \$10 per person.

We meet in the Alva United Methodist Church Fellowship Hall the 3rd Tuesday of each month at 1 pm.

**Everyone is welcomed to join or simply attend the meetings as guests!**



**About 50 of the near 70 members of the Alva Garden Club gathered on March 21 for their monthly meeting. Yes, there are sweet treats!**

---

# SCORE Southwest Florida

**3650 Colonial Blvd, Fort Myers, FL 33966, (239) 931-9807,  
[swflscore@gmail.com](mailto:swflscore@gmail.com)**

If you are dreaming of starting your own business, or needing to grow your current business, the local 30 plus SCORE volunteers and personal certified mentors are waiting for your call or email. And remember, our services are completely FREE. We volunteer to serve so YOU can succeed.

SCORE is a fully independent private 501-3C non-profit with accountability to and some funding from the SBA

**SCORE Mentors...**with experience in virtually every business category you can imagine help with:

- Business plan development, sales and marketing strategies
- Financing, taxes and E-commerce
- Management, administrative and operational procedures
- Ongoing advice to help your decision making

**Life-Long Learning Made Easy**

SCORE mentors, sponsors and local business owners with a specific areas of expertise conduct a variety of very popular, regularly scheduled, low-cost and free educational seminars and online workshops for establishing and managing a successful small business.

**Free Resources**

With access to a wide variety of documents, templates and tools to assist you in starting or growing your business, the information provided here covers a wide range of subjects including initial business planning, capital sources, government agencies, and much more.

---

Contact (239) 931-9807, [swflscore@gmail.com](mailto:swflscore@gmail.com) for more information

---



## JOB-LINK



Florida Job Link connects talent and opportunity, enabling on-the-spot HIRING! UPCOMING EVENTS BELOW! WE KEEP FLORIDA WORKING! The Best and Brightest Candidates connect with Top Florida Employers face-to-face via our Hiring Events in cities throughout Florida! Florida Job Link is voted #1 Job Fair experience in the state of Florida by attendees!

<https://www.indeed.com/q-Goodwill-I-Lee-County,-FL-jobs.html>



# Charleston Park Neighborhood Association

2541 Charleston Park Drive, Alva, FL 33920. 239-728-8895  
[Charlestonpark1926@gmail.com](mailto:Charlestonpark1926@gmail.com)

Community Center Activities & Training, Lee County Children's and youth sport park, Events throughout the year, Meetings for all every second Monday of the month at 6pm at the Community Center are also available virtually via ZOOM.



## **NEW NEWS!**



-The Charleston Park FOOD PANTRY is now open every week at the Community Center from 10-2pm.

-This year's Charleston Park Day has been cancelled while we plan for next year's BIGGEST Charleston Park Day Festival Fundraiser EVER. This is the 4th Saturday of April each year.

-We are also looking for donations of funds to help with repairs at the Charleston Park Community Center. We are looking to put on a new roof and flooring, The Air Conditioner needs upgraded to a more efficient model that is also large enough to cool build properly.

-Donations may be dropped off or mailed to: Charleston Park Neighborhood Association, 2541 Charleston Park Dr., Alva, Florida, 33920.

-Please make payable to: Charleston Park Neighborhood Association.

-Questions? Contact Lashay Russ, Director, at the Community Center 239-728-8895 Monday-Thursday 9-3pm, and Friday 9am-2pm.

-We are a 5013-c tax-exempt organization and will be glad to give you a receipt for your donation.





## The Great Calusa Blueway Paddling Trail

A 190-mile marked canoe and kayak trail that meanders through the coastal waters and inland tributaries of Lee County, Florida. It attracts everyone from first-time kayakers to advanced paddlers and is home to abundant marine life, shore birds and crustaceans.

<https://www.fortmyers-sanibel.com/calusablueway>

---



[www.RichAndLaurieInSouthFlorida.com](http://www.RichAndLaurieInSouthFlorida.com)

**Listen to the Podcast and follow on Youtube, and more!**

***For information on where to go and what to do in SWFL!***

<https://www.youtube.com/channel/UCvcRaJr9jghdQOgsnU2B6Pw>

---



## The Firehouse Community Theatre, Inc. Announces Their 30th Season!

**241 N Bridge St, Labelle, FL 33935 (863) 675-3066**

**"Divorce Southern Style" (Comedy) April 21, 22, 23 & 28, 29, 30**





*1/12/98. Old Cann Mills,  
Caloosahatchie River*

Figure 3



Figure 4



Figure 5



Figure 6

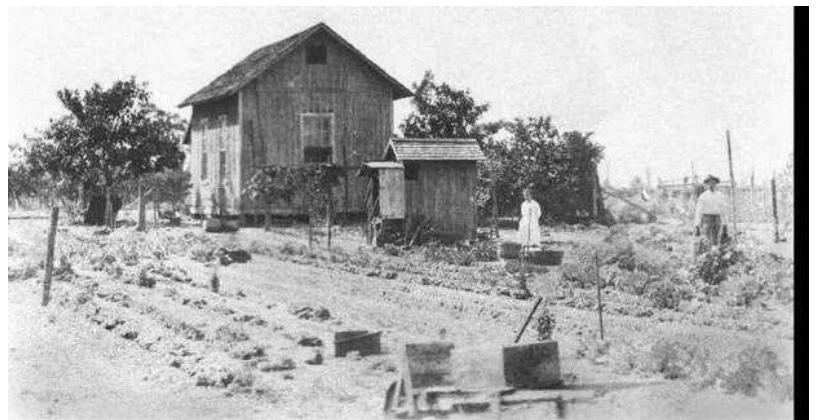


Figure 7



The global farm is not only a hands-on training ground for those searching for help in tropical agriculture, but also an educational tool to make the public aware of hunger related issues and the answers there are to alleviate malnutrition and starvation.



17391 Durrance Road, North Fort Myers, FL 33917 | 239.543.3246 | [info@echonet.org](mailto:info@echonet.org)  
<https://www.echonet.org>



There are six fenced-in "Dog Parks" which allow for off-leash play. On-leash dog walking is allowed at many locations (listed below).

Dogs must be accompanied by an adult and must remain on-leash at all times while walking in the park. Find out more at: <https://www.leegov.com/parks/dog-parks>



### Six Mile Cypress Slough, Lee County Park

7751 Penzance Boulevard, Fort Myers, FL 33966

A mile of wonder 30 minutes away from Alva.



### Manatee Park

10901 Palm Beach Blvd,

Fort Myers, FL 33905

239 690 5030



### Olga Community Park

2325 S Olga Dr, Fort Myers, FL 33905

(239) 533-7275



## Hickey's Creek Mitigation Park

17980 Palm Beach Blvd, Alva, FL, 33920

-Great for quiet creek kayaking. -Fun for walks and picnics.



### ALVA BOAT RAMP PARK

21580 Pearl St,

Alva, FL 33920



## W.P. Franklin Lock & Dam South Recreation Area

Franklin Lock Rd. , Alva , FL 33920. Contact: (239) 694-2582

WP Franklin South Recreation Area is a day use area located on the Caloosahatchee River adjacent to the WP Franklin Lock and Dam. Visitors can watch boats traversing the 152 mile Okeechobee Waterway



### W.P Franklin Lock & Dam CAMPGROUND

Camp by reservation only

17850 NORTH FRANKLIN LOCK ROAD, ALVA, FL 33920, 239-694-8770

<https://www.recreation.gov/camping/campgrounds/233661>



### Alva Community Center PARK

21471 North River Road, Alva, FL 33920 , (239) 728-2882

Shady lawns & baseball field

### Telegraph Creek: Unspoiled kayak trail

out-of-the-way, uncrowded, scenic, quiet and full of wildlife.







# Caloosahatchee Regional Park

19130 North River Road, Alva, FL 33920 (239) 694-0398

EMAIL: [leeparks@leegov.com](mailto:leeparks@leegov.com)

Shelter rentals, primitive tent camping, Horse and bike trails.



## NORTH FORT MYERS Recreation Park

2000 North Recreation Park Way, North Fort Myers, FL 33903,

This park features an 18 hole Disc Golf course , call (239) 297-8916

### Veterans Park Recreation Center

55 Homestead Road South, Lehigh Acres, FL 33936



**BABCOCK RANCH ECO TOURS, Museum and Gator Shack Restaurant** Go to website to reserve tours

<https://babcockranchecotours.com/>



# Alva Angel's



### Giving back to the families of our community

Are you cleaning out your house and planning to donate the items you no longer want? Please consider donating those items to Alva Angel's. We can pick up small and large items and we will gift those items to people in need or sell the items to raise money for the upcoming holiday season to purchase wish list items.

Facebook Page: <https://www.facebook.com/AlvaAngelsOrganization>



Lee County Conservation 20/20 manages over 50 preserves spread throughout Lee County, including within the boundaries of most cities. These preserves combined total nearly 30,000 acres.

Preserves are open daily during daylight hours. Access may be limited at certain locations due to temporary flooding, special restoration projects, or isolated location. Information about each Conservation 20/20 preserve can be accessed from the website:

<http://www.leegov.com/conservation2020/preserves>



Bob Janes Preserve



Daniel's Preserve at Spanish Creek



Carter's Lane



Buckingham Trails Preserve



Olga Shores Preserve



Oak hammock



Alva Scrub Preserve



Telegraph Creek Preserve



Frank Mann Preserve



## ***Chastain Rallies to Fourth at Austin***

***Ross Chastain finished fourth in the Echopark Texas Grand Prix NASCAR Cup Series race at Circuit of the Americas Sunday afternoon.***

***Impact Chastain would have to battle in the early laps to grab a Top-5 finish in stage 1. He'd fall back in the field from there and would once again have to rally during stage 3. A late-race spin would seemingly take Chastain out of contention, but the multiple overtime restarts would allow him to regain track position. He'd battle in the closing laps and get around William Byron to earn the impressive fourth-place finish. It was Chastain's second Top-5 finish of the season.***

**SWFL CRIME STOPPERS**

**SAY IT HERE!**  
**WHY?**  
We guarantee anonymity!  
We pay cash rewards.

**HOTLINE: 1-800-780-TIPS**  
**CLICK HERE TO SUBMIT A TIP**

DOWNLOAD OUR FREE MOBILE APP FOR FREE

SWFL Crime Stoppers is NOT a substitute for calling 9-1-1. In the event of an emergency, please call 9-1-1. Those who submit a tip are called "tipsters" and will remain 100% anonymous. No caller ID. No recorded lines. No tracking of phone calls. We want your information, not your name!

Put simply it is a three-part approach to solving the crime problem. SWFL Crime Stoppers relies on cooperation between our community, the media, and law enforcement to provide a flow of information about crime, wanted fugitives and suspicious activities.



## Mission

Volunteer Florida strengthens Florida's communities through national service, fostering volunteerism and leveraging resources.

<https://volunteer.volunteerflorida.org/>



Effective immediately, persons who are experiencing homelessness (living outside, in a car, or other place not meant for human habitation) and seeking permanent housing resources in the Lee County CoC should contact 239-533-7900, and select options 1, 5, then 3, to complete a Coordinated Assessment.



Southwest Florida Cooking by

MAGGIE Bellmann

of Oak Park, Alva

Contact Maggie to find out more at: [Maggi1rn@aatt.net](mailto:Maggi1rn@aatt.net)



## Tropical Kisses

### Ingredients:

- 1 14-oz bag sweetened flaked coconut
- 2/3 cup all-purpose flour
- 1/2 teaspoon salt
- 1 14-oz can sweetened condensed milk
- 1 teaspoon almond extract
- 1 teaspoon vanilla extract
- 1 egg white
- 28-30 Hershey's Kiss chocolates

### Instructions:

Line 2 baking sheets with parchment paper then preheat oven to 350 degrees.

Combine coconut, flour and salt in a large mixing bowl then toss with a fork until well combined.

Add sweetened condensed milk, almond extract and vanilla extract then stir with a wooden spoon (or another sturdy spoon) until mixed well.

Beat egg white in a small bowl with a fork until frothy. Fold egg white into coconut dough.

Using a #40 cookie scoop or teaspoons, portion out balls of dough onto prepared pans about two inches apart. (If you do not have a cookie scoop, use two spoons to portion out mounds of about 2 tablespoons each of batter).

Bake cookies at 350 degrees for 15-16 minutes or until the bottoms of the cookies are lightly browned.

While cookies are baking, unwrap Hershey's Kisses.

Remove cookies from oven then cool for one minute. Press one Hershey's Kiss candy into each cookie then cool cookies completely before removing from the pan.

Store at room temperature in an air-tight container up to one week.



## LaBelle Downtown Revitalization Corporation

proudly announces the Downtown LaBelle Historic Walking Tour! Take a walk into Old Florida's past through our new self-guided tour, featuring audio clips of those that helped make LaBelle what it is today.

Visit [Downtownlabelle.com/walking\\_tour.com](http://Downtownlabelle.com/walking_tour.com) to start your tour today, or download the app with your Apple or Android device by searching "Downtown LaBelle." Happy trails!



Lee/Hendry County  
Office  
  
8280 College  
Parkway, Suite 201  
  
Fort Myers, FL 33919

(239) 288-4224



**CALL NUMBER AT LEFT FOR CORRECT ZOOM LINK**

**The library and bookdrop at the  
Alva Community Center  
will close Friday, March 24.**

**The newly renovated  
RIVERDALE BRANCH LIBRARY  
opens at Noon Tuesday, April 25!**



2421 Buckingham Road,  
Fort Myers

### **Branch Hours**

Monday ..... Closed  
Tuesday ..... Noon - 8 p.m.  
Wednesday ..... 10 a.m. - 6 p.m.  
Thursday ..... 10 a.m. - 6 p.m.  
Friday ..... 9 a.m. - 5 p.m.  
Saturday ..... 9 a.m. - 5 p.m.



Always open at [leelibrary.net/online](http://leelibrary.net/online)  
239-479-4636



# How To Keep Your Password Secure



Passwords are the locks on your account doors. You keep lots of personal information in your online accounts, including your email, bank account, and your tax returns, so you want good protections in place. Here’s a checklist to make sure your passwords are secure.

- Make sure your password is long and strong. That means at least 12 characters. Making a password longer is generally the easiest way to make it stronger. Consider using a passphrase of random words so that your password is more memorable but avoid using common words or phrases. If the service you are using does not allow long passwords, you can make your password stronger by mixing uppercase and lowercase letters, numbers, and symbols.
- Don’t reuse passwords you’ve used on other accounts. Use different passwords for different accounts. That way, if a hacker gets your password for one account, they can’t use it to get into your other accounts.
- Use multi-factor authentication when it’s an option. Some accounts offer extra security by requiring something in addition to a password to log in to your account. This is called multi-factor authentication. The “something extra” you need to log in to your account fall into two categories:
  - Something you have — like a passcode you get via an authentication app or a security key.
  - Something you are — like a scan of your fingerprint, your retina, or your face.

## PASSWORD CHECKLIST

- Consider a password manager. Most people have trouble keeping track of all of their passwords. The longer and more complicated a password is, the stronger it is, but a longer password can also be more difficult to remember. Consider storing your passwords and security questions in a reputable password manager. To find a reputable password manager, search independent review sites, and talk to friends and family for ones that they use. Make sure to use a strong password to secure the information in your password manager.
- Pick security questions only you know the answer to. If a site asks you to answer security questions, avoid providing answers that are available in public records or easily found online, like your zip code, birthplace, or your mother’s maiden name. And don’t use questions with a limited number of responses that attackers can easily guess — like the color of your first car. You can even use nonsense answers to make guessing more difficult — but if you do, make sure you can remember what you use.

# COMMUNITY COOPERATIVE



## *Community Cafe, Mobile Pantry's, and Meals on Wheels*

**HOW YOU CAN HELP: DONATE** so that we can continue purchasing food to distribute at our Mobile Pantries. **HOST A FOOD DRIVE** and collect non-perishable food items to stock our shelves.

**VOLUNTEER** in the Community Cafe, at a Mobile Pantry, or as a Meals on Wheels Driver.

Call (239) 332-7687 [Tami@communitycooperative.com](mailto:Tami@communitycooperative.com) or call 239-332-7687, ext. 125.



### Sign Up to be a Food Truck Vendor for the Event!

Think you have the best food truck in town? Sign up to be a vendor at our Empty Bowls event TODAY! Food vendor space is limited so act fast!

Contact Eunice Marquez at [Eunice@communitycooperative.com](mailto:Eunice@communitycooperative.com) or 239-332-7687 ext. 125 to sign up.



### Volunteers Wanted!

We could use your help at the Empty Bowls event! If you are a student looking for service hour credit for school, or just have a free Saturday and want to help out at a fun event, sign up today!

[Sign Up to Volunteer](#)



Support our work, even if you can't make it to Empty Bowls! Just \$20 provides food for a family of four for an entire week.

## Join Us for Empty Bowls 2023!

11am-2pm | Centennial Park Downtown Fort Myers

We can't wait to see you Saturday, April 29th for the return of Empty Bowls presented by Florida Power & Light!

Empty Bowls supports Community Cooperative's emergency food programs to ensure our neighbors can receive the food and resources they need. By attending this event, you are helping us fight hunger and homelessness in our community.

Admission is **FREE** for kids and **\$10** for adults 18 years and older and includes soup tastings and a handcrafted ceramic bowl made by Lee County School District while supplies last, as a reminder of those who go hungry right here in Lee County.





## Harry Chapin Food Bank OF SOUTHWEST FLORIDA

*Fighting Hunger, Feeding Hope*

Give TIME. Give MONEY. Give FOOD.

To make a donation, **call (239) 334-7007** or visit  
[www.harrychapinfoodbank.org](http://www.harrychapinfoodbank.org)

We do our best to keep you all informed on where you can get food and how you can help.

For Food pickup locations:

<https://harrychapinfoodbank.org/?s=Food+locations>



SalusCare is a Fort Myers, Florida based not-for-profit mental health and substance abuse service provider.

SalusCare has 6 locations to serve you throughout Southwest Florida. Our fees are affordable and may be adjusted to the means of our patients based on household income.

SalusCare accepts Medicaid, Medicare, Visa, MasterCard and some major health insurance providers. Please call us beforehand to verify that your insurance is accepted.

SalusCare provides services for all regardless of disability or handicap. Accommodations will be provided upon request. All substance abuse programs and most mental health services are accredited by CARF International, an independent, nonprofit accreditor of health and human services.

<https://www.saluscareflorida.org/>

Call our Welcome Center at 239-275-3222 Mon. – Fri. 8:00 am – 5:00 pm to speak with a customer service representative to schedule a Care Connection appointment in-person or via tele-health.



---

**A New Church Near You!**  
In fact, as close as your living room,  
office, kitchen, or phone.

**HIGHER  
POWER  
CHURCH**

HigherPowerChurch.org

ONLINE ONLY      REV. JOHN ZIMMERMAN

**WORSHIP WITH US**

"Higher Power Church is an online church to search, discover, celebrate, and share Jesus Christ as our Higher Power." It is a safe place for all, especially those in addiction, to grow spiritually with God."



Reverend John Zimmerman, Ordained Pastor and Evangelist from the Western Pennsylvania Conference of the United Methodist Church travels with his wife Christine in their truck and fifth wheel trailer up and down America's east coast all year long.

They currently live at Riverside Campground, Alva, Florida





# Alva Area FOOD PANTRIES

## Grace UMC, Fort Myers Shores

Second Saturday Free Meal & Food Pantry, 8am to 2pm

**CALL to RESERVE your FOOD**

**239-694-2797**

## Charleston Park Community Center

239-728-8895

FOOD PANTRY

Every week, Friday, 10am-2pm

## ALVA UMC

Food Pantry @ Bethany House

Food Pantry: 9am-12pm 2<sup>nd</sup> & 4<sup>th</sup> Wednesdays

239-728-2277

## CALVARY NATIONS Church

19850 Palm Beach Boulevard, Alva

Every Saturday, 3pm until supplies run out.

239-7285566

## St. Vincent DePaul RC

Our Lady's Cupboard Food Pantry

Call (239) 694-3985 for hours open.

## Some of our local ALVA area churches:

St. Vincent DePaul's RC Church

13031 Palm Beach Boulevard, Fort Myers, FL 33905

[www.stvincentftmyers.org](http://www.stvincentftmyers.org) 239-693-0818

Alva United Methodist Church

21440 Pearl St. P.O Box 96

Alva, FL 33920

[Alvamc@embarqmail.com](mailto:Alvamc@embarqmail.com)

[www.ouralvachurch.org](http://www.ouralvachurch.org) 239-728-2277

Alva Church of God

21520 Park St, Alva, Florida 33920

239-728-2644

Liberation International Church

Avenue D, Charleston Park

Alva, FL 33920,

239-601-4870

New Hope Faith Temple of Jesus Christ

23210 Avenue D, Charleston Park

Alva, FL, 33920 239-770-4974

Buckingham Presbyterian Church

4241 Buckingham Road

Fort Myers, FL 33905

[www.buckinghampc.org](http://www.buckinghampc.org)

Light of the Nations Filipino Congregation

19850 Palm Beach Blvd (at Calvary Church)

Alva, FL, 33920

239-728-5566

First Spanish Assembly of God Church

2219 Joel Blvd

Alva, FL 33920 239-728-5440

Countryside Wesleyan Church

17750 Palm Beach Blvd, Alva, FL 33920

239-368-3270

Calvary Nations Church

19850 Palm Beach Blvd

Alva, FL 33920

[CalvaryChurchSwfl@yahoo.com](mailto:CalvaryChurchSwfl@yahoo.com)

[www.calvarynations.org](http://www.calvarynations.org) 239-728-5566

First Baptist Church of Alva

2790 Joel Blvd, Alva, FL, 33920

[www.alvabaptist.com](http://www.alvabaptist.com) 239-728-2034

Grace United Methodist Church, Ft Myers Shores

14036 Matanzas Drive, Ft Myers, Florida 33905

[www.egracechurch.com](http://www.egracechurch.com) 239-694-2797

Bethlehem Lutheran Church

14531 Old Olga Road,

Fort Myers, FL 33905

[www.blcefmm.org](http://www.blcefmm.org) 239-694-3878

Olga Baptist Church

2364 South Olga Drive

Fort Myers, FL 33905

[www.olgabaptist.org](http://www.olgabaptist.org) 239-694-2012

[olgabapch1@embarqmail.com](mailto:olgabapch1@embarqmail.com)



**Types of 12 Step Programs in Lee County, FL:** Because Alcoholics Anonymous was exclusive to people who struggled with alcohol addiction, a vast array of other programs were formed to aid and support those in recovery from other addictive disorders. These include the following groups:

Any type of group you do not find listed below may be sought at this website:  
<https://www.addicted.org/directory/category/lee-county-3.html>

**Before going to the meeting, confirm time and place by phone**

## ALVA:

**Alva Community Center**, 21471 N River Rd, Alva, FL 33920

-AA Way, 8pm Wednesdays, Big Book, OPEN

**St. Matthews House**, Cypress Creek & North River (rte 78) Roads, Alva

Jill's Place (for women) AND Justin's Place (for men), 239-687-7633 or [intake@stmatthewshouse.org](mailto:intake@stmatthewshouse.org).

<https://stmatthewshouse.org/whatwedo/justinsplace/jills-place-retreat-center>

## FORT MYERS SHORES:

**Grace UMC**, Fort Myers Shores, (239) 694-2797, 4036 Matanzas Dr, Fort Myers:

-AA COED, Open Disc: Mon, 12pm, office

-AA Men: Mon, 7pm, office

-AA Women: Tues, 7pm, office

-AA COED, Open Disc: Wed, 12pm, office

-AA Open Disc: Thu, 7pm, office

-AL Anon COED: Fri, 12pm, Classroom 2

-AA COED, Open Speaker: Sat, 7pm, Community Center

-AA COED, Open Disc: Sun, 7pm, office

-CHOOSE RECOVERY: 6:00pm, Grace UMC Shores Facebook Page LIVE until COVID-19 is under control.

**St. Vincent De Paul RC**, 13031 Palm Beach Blvd, Fort Myers: Fort Myers Shores Group OStAH – Tuesday, 8:00 pm

**Calvary Assembly of God**, 11431 Palm Beach Blvd, Fort Myers:

-Night Owls OD – Saturday, 10:05 pm

## LEHIGH ACRES:

**-AA SUNRISE GROUP - MONDAYS, WEDNESDAYS, FRIDAYS & SATURDAYS 7AM**

705 Leeland Heights Blvd E, Lehigh Acres

(239) 275-5111

### LEHIGH ACRES (cont):

**-AA MONDAY AT A TIME - MONDAY 6:30PM**

5513 8th St W, Lehigh Acres

(239) 275-5111

**-AA CHAIR'S CHOICE - TUESDAY 6:30PM**

5513 8th St W, Lehigh Acres

(239) 275-5111

**-AA SPIRITUAL SEARCH GROUP - TUESDAY 8PM**

705 Leeland Heights Blvd E, Lehigh Acres

(239) 275-5111

**-AA THIRSTY THURSDAYS - THURSDAY 6:30PM**

5513 8th St W, Lehigh Acres

(239) 275-5111

**-AA HERE AND NOW- SUNDAY 6:30PM**

5513 8th St W, Lehigh Acres, 33971,

(239) 275-5111

**-NA HOPE WITHOUT DOPE - THURSDAY & SATURDAY  
6:30PM**

705 Leland Heights Blvd. E., Lehigh Acres,  
(866) 819-5346

**-AA LEHIGH SUNDAY NIGHT - SUNDAY 8PM**

705 Leeland Heights Blvd E, Lehigh Acres  
(239) 275-5111

**-AA HEARD IT THROUGH THE GRAPEVINE - FRIDAY  
6:30PM**

5513 8th St W, Lehigh Acres  
(239) 275-5111

**-AL ANON MOVING FORWARD AFG - MONDAY 10AM**

705 Leeland Heights Blvd E, Lehigh Acres  
(888) 425-2666

**-AA FIRST THINGS FIRST - MON-SUN 7AM**

5513 8th St W, Lehigh Acres  
(239) 275-5111

**-AA NOONERS - MON-SUN 12PM**

705 Leeland Heights Blvd E, Lehigh Acres  
(239) 275-5111

**LABELLE:**

**Good Shepherd Church, (239) 275-5111, 1098  
Collingswood Pkwy, Labelle**

-AA-PORT LABELLE GROUP – ODH- SUNDAY 7PM

-MAKING THE EFFORT -OLbHD- MONDAY 7:00 PM

-AS BILL SEES IT- OD- SATURDAY 9:00AM

-WED BIG BOOK GROUP- OBBH- WEDNESDAY NOON

-OPEN DISCUSSION -ODH- FRIDAY 7:00PM

**First Christian Church, Rte 29 & Ford Ave, LaBelle**

-LABELLE GROUP-ODAH- THURSDAY 7:00PM

-STEP GROUP-Cst- TUESDAY 7:00PM

**-AI Anon- AFG - THURSDAY 7PM**

138 Ford Ave, Labelle  
(888) 425-2666

**-AA-THURSDAY 7PM**

138 Ford Ave, Labelle  
(239) 275-5111

**-AA-MEETING AT THE INN - WEDNESDAY 7:15PM**

Port LaBelle Inn, 1568 Oxbow Dr, Labelle  
(239) 275-5111

**NOT TODAY - MONDAY 6:00PM**

133 N Bridge St, Labelle  
(866) 819-5346

---

**IF you know of any other 12 step or non-12 step recovery group in the Alva area (From Hendry County Line to Fort Myers Shores, north and south of our river) please let me know its name, location and the phone number for information to list here. Thank you! [kendewalt@ontheriver.org](mailto:kendewalt@ontheriver.org)**

---



# Important Phone Numbers & Websites

Font Size: [Share & Bookmark](#) [Feedback](#) [Print](#)

AGENCY	NORMAL BUSINESS	EMERGENCY
American Red Cross (Local Chapter)	239-278-3401	239-278-3401
Arson Alert Hotline	800-342-5869	800-342-5869
Blood Donor Centers	888-9-DONATE	
- Lee Memorial Blood Center	239-343-2333	
- Florida's Blood Centers	239-574-3170	
Cape Coral Emergency Management	239-573-3022	911
Cape Coral Police Department (non-emergency)	239-574-3223	911
Dept. of Financial Services (Insurance)	239-461-4001	800-22-STORM
Federal Emergency Management Agency	800-621-3362	800-462-7585
Florida Division of Emergency Management	850-413-9969	
Fort Myers Police Department	239-321-7700	911
Lee County Animal Services	239-533-7387	239-533-7387
Lee County Emergency Information Hotline / United Way 211	239-433-2000	211
Lee County Emergency Management	239-533-0622	239-533-0622
Lee County Government	239-533-2111	
Lee County Health Department	239-332-9501	239-332-9501
Lee County Public Safety & EMS	239-533-3911	911
Lee County Sheriff's Office	239-477-1000	911
Mobile or Manufactured Home Residents	850-617-3004	
National Weather Service/Tampa Bay	813-645-2323	
Poison Information	800-222-1222	800-222-1222
Salvation Army, The	239-278-1551	239-278-1551
Sanibel Police Department	239-472-3111	911
Traffic Conditions in Florida (Current)	511	511
United Way of Lee, Hendry, Glades & Okeechobee Counties	239-433-2000	211

AGENCY	WEB ADDRESS
Community Emergency Response Teams (CERT)	<a href="http://www.ready.gov/cert">www.ready.gov/cert</a>
Department of Financial Services (Insurance)	<a href="http://www.myfloridacfo.com">www.myfloridacfo.com</a>
Department of Homeland Security	<a href="http://www.dhs.gov/">www.dhs.gov/</a>
Florida Lightning Safety	<a href="http://www.weather.gov/safety/lightning">www.weather.gov/safety/lightning</a>
Mobile or Manufactured Home Residents	<a href="http://www.flhsmv.gov/mobilehome">www.flhsmv.gov/mobilehome</a>
American Sign Language Preparedness Videos	<a href="http://www.lee.gov.com/publicsafety/emergencymanagement/plan">www.lee.gov.com/publicsafety/emergencymanagement/plan</a>
StormReady	<a href="http://www.weather.gov/stormready/">www.weather.gov/stormready/</a>

## Manatee & Eco River Tours

March through November – join us for an ECO RIVER TOUR where we leave from Sweetwater Landing Marina on SR 31 in Fort Myers and travel eastbound on the Caloosahatchee River through the original river course (oxbows) learning of the history of the area. Travel through the W.P. Franklin Locks and then return to the marina after a lovely 2-hour narrated cruise.



### SUNSET CRUISE!

Join us for a sunset cruise from Sweetwater Landing Marina going westbound on the Caloosahatchee River. A nice spread of hors d'oeuvres is provided along with water and soda. You are welcome to bring your own beverage if you'd like. Enjoy a leisurely cruise on the Caloosahatchee, watch the birds come into rest for the night and enjoy the spectacular southwest Florida sunsets!



All tours leave from Sweetwater Landing Marina located at 16991 S.R. 31, Fort Myers, FL 33905

To book visit our website at: [www.ManateeAndEcoRiverTours.com](http://www.ManateeAndEcoRiverTours.com)





Come join us at The Venue at Mudge Ranch to listen (and maybe even dance) to live Vegas Style Shows. Enjoy a night out with your special someone or a group of friends. You'll find we are offering a wide variety of genres to fit everyone's taste and style.

- Relive your "yesteryears" with throwback shows and classic music.
- Add a little Rockabilly to your nights.
- Many other fun entertainment genres such as impersonations and comedy!

No matter what your preference, you'll always be able to enjoy a fun show in a fantastic setting - You'll find we're the best place in and around LaBelle to chill with friends. From country to rock, to swing, to pop, and so much more, there's nothing like laughing it up or listening to a live performance to liven up your night!

- Tickets will be available soon.
- Check our website for show dates and availability.
- Follow us on Facebook & Instagram

**Address: 1323 Loblolly Bay Rd SW, LaBelle, FL 33935**



**LaBelle Entertainment**

Visit our website for more information and check out our upcoming shows!

<https://www.labelleentertainment.com>

Most events have dinners available for purchase. Dinners start at 5 PM or 6 PM, depending on show time. Dinners are optional and you may accept or decline the dinner when purchasing your ticket. No dinners will be sold at door. Show tickets may be available at door, cash or check only.

Our event season will open on December 16<sup>th</sup> with a Christmas Show.

Meanwhile in Florida, the alligators have developed sign making skills.



Turning 65 or new to Medicare?

## It's time to get Medicare-ready

### Get a free\* benefits review from a professional

Whether you have Medicare already or you're taking your first steps toward it, now's the time to learn about what Humana Medicare Advantage plans are available for 2023 and what they offer.

### More than a plan

Humana goes the extra mile to help you get the care you need. This is more than health insurance. It's human care.

See why more than 8.7 million people across the country<sup>1</sup> have chosen Humana Medicare Advantage plans and stand-alone prescription drug plans.

### Call a licensed Humana sales agent



**Breanna Willis**  
239-771-9949 (TTY: 711)  
Local Alva agent  
7 days a week  
bwillis12@humana.com

## Humana. A more human way to healthcare™

\* There's no obligation to enroll.

<sup>1</sup> Humana Inc. First Quarter 2022 Earnings Release, April 27, 2022. Humana is a Medicare Advantage HMO, PPO and PFFS organization with a Medicare contract. Enrollment in any Humana plan depends on contract renewal. **At Humana, it is important you are treated fairly.** Humana Inc. and its subsidiaries comply with applicable federal civil rights laws and do not discriminate on the basis of race, color, national origin, age, disability, sex, sexual orientation, gender, gender identity, ancestry, ethnicity, marital status, religion or language. **English:** ATTENTION: If you do not speak English, language assistance services, free of charge, are available to you. Call **877-320-1235 (TTY: 711)**. **Español (Spanish):** ATENCIÓN: Si habla español, tiene a su disposición servicios gratuitos de asistencia lingüística. Llame al **877-320-1235 (TTY: 711)**. **繁體中文 (Chinese):** 注意: 如果您使用繁體中文, 您可以免費獲得語言援助服務。請致電 **877-320-1235 (聽障專線: 711)**。

Paid Advertisement 4-11/23

**LS Tractor**  
 Matt Miller Tractors  
 239-693-0305  
 7261 WSR 80 Labelle Fl 33905  
**Free Loader. Zero Down.**

**Low Interest for 84 Months.**  
**ON ALL MODELS**  
**Financing Available 0 Down 0 %**  
**Free Local Delivery**  
**Package Deals Available**

Paid Advertisement 4-6/24

**PATTY WALKER**  
 REALTOR<sup>®</sup>  
 239-340-3904

Cell  
 239-340-3904  
 Office  
 239-693-1959  
 Email  
 PattyWalkerREMAX@gmail.com  
 Web  
 GulfCoastLivingPatty.com  
 Address  
 12928 Palm Beach Blvd., Ste A  
 Fort Myers, FL 33905  
 Each Office Independently Owned & Operated



# UKRAINE EMERGENCY APPEAL

#STANDWITHUKRAINE

[https://donate.redcrossredcrescent.org/ua/donate/~my-donation?\\_cv=1](https://donate.redcrossredcrescent.org/ua/donate/~my-donation?_cv=1)

ON THE RIVER Alva Area Newsletter Advertising Rates (current since January 17, 2020)

This monthly newsletter is a free to subscriber on-line offering. We are not offering anything in print form at this time. We encourage folk to share it with anyone and in any way they wish, and we place the newsletter in the Alva Florida Friends and Family, and the Know Your Neighbors 239, Facebook Pages which have over 3000 subscribers, and the NEXT DOOR ALVA web page which has over 5,000 subscribers. We have over 1,200 personal email subscribers.

Ads run full across the 9x11" OTR page, then down the fraction of the page you choose.

Advertising rates per month :

1/8th Page... one issue: \$15.00, six issues: \$12.00, twelve issues: \$10.00  
1/4 Page... one issue: \$25.00, six issues: \$20.00, twelve issues: \$17.00  
1/2 Page... one issue: \$45.00, six issues: \$35.00, twelve issues: \$30.00  
Full Page... one issue: \$75.00, six issues: \$60.00, twelve issues: \$50.00

Ads will only appear on pages following all articles and nonprofit promotions are formatted. We can format ads for you with WORD.doc copy and j.png photos or logos. We can also scan any copy and/or photos you provide to create a single j.png of your ad.

You will receive a screenshot proof of the ad as soon as we have it formatted for your approval before its issue is published. Lack of response to the proof will be considered acceptance.

Full payment for all issues contracted for is to be made in full by the 15th of the month preceding the first month in which the ad is to appear, which is also the date the ad copy is to be received. Payments are to be by check (made out to Ramona DeWalt, noted: OTR.

CONTACT: Ken DeWalt, publisher, with any questions. [kendewalt@ontheriver.org](mailto:kendewalt@ontheriver.org)

---

Special thanks to all who financially support the mission of ON THE RIVER.

We especially encourage our readers to patronize the professional and community supporters who advertise with us.

---